

Modello SP 2_CE

The Riflesso collection is characterised by the simplicity and lightness of the different shapes of its diffusers. The three larger silhouettes are now also available with a second LED, the new G and P shapes allow for cluster compositions, and the new wall version completes the collection.

GLASS FINISH

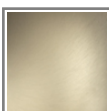


CRTR
crystal transparent

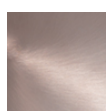


FUTR
smoky transparent

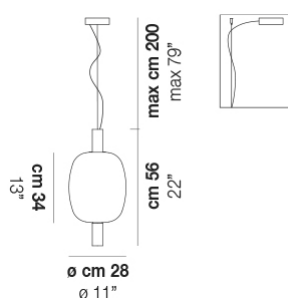
FRAME FINISH



BKS
matt gold 3



RAV
matt copper 2



RIFLESSO SP 2 FUTR BKS L22 10 CE

LIGHT SOURCES

1x12,5W 35 V LED 2700 K 12,5 W 1150 lm DIM2 Phase Cut
1x12,5W 35 V LED 2700 K 12,5 W 1150 lm DIM3 0-10V, Push
1x12,5W 35 V LED 3000 K 12,5 W 1150 lm DIM2 Phase Cut
1x12,5W 35 V LED 3000 K 12,5 W 1150 lm DIM3 0-10V, Push

TECH DATA

IP20

VOLUME: Mc 0,10

PACKAGE: N.2

NET WEIGHT: Kg 7,00

GROSS WEIGHT: Kg 10,00

CERTIFICATIONS

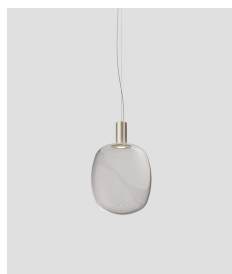
EU Cert



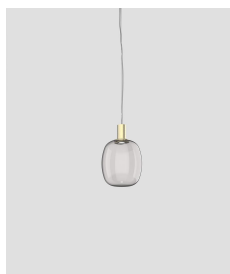
International Cert



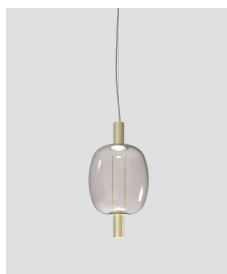
OTHER VERSIONS AVAILABLE



RIFLESSO SP G



RIFLESSO SP P



RIFLESSO SP 2L2